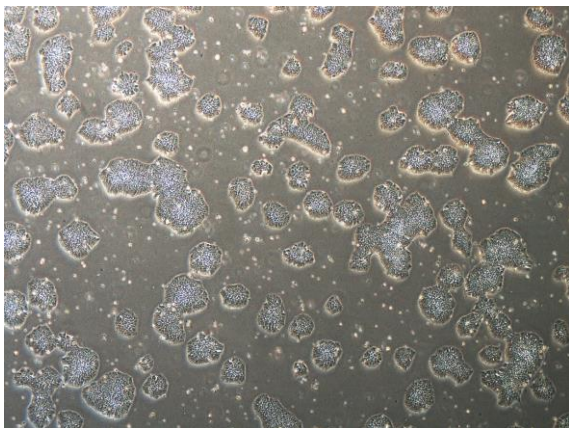
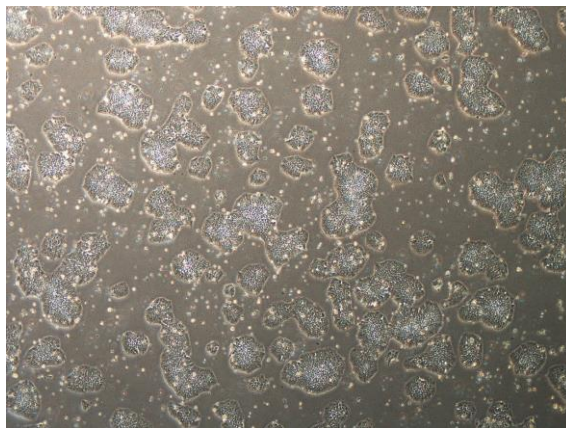


## 【 CiRA-j-1571 】 Morphology of iPSC colonies

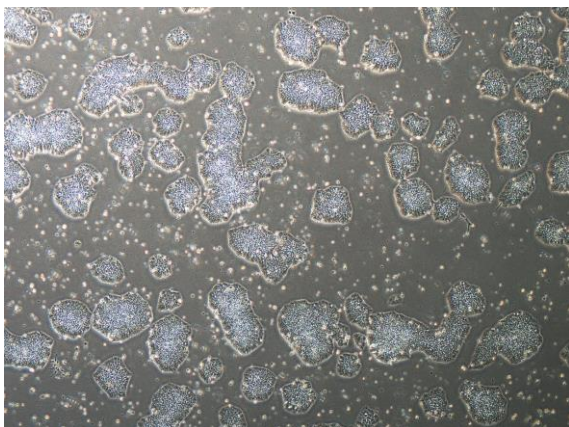
CiRA-j-1571-A: passage-3



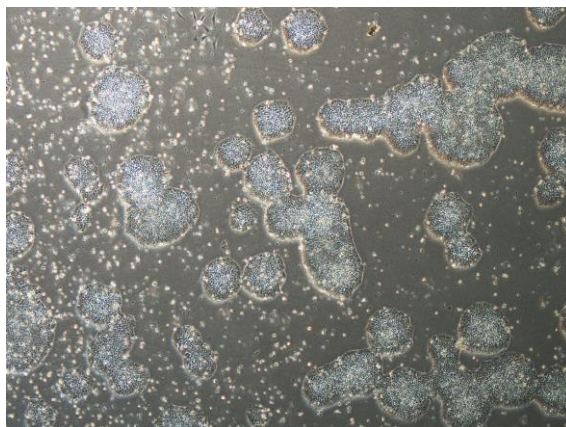
CiRA-j-1571-B: passage-3



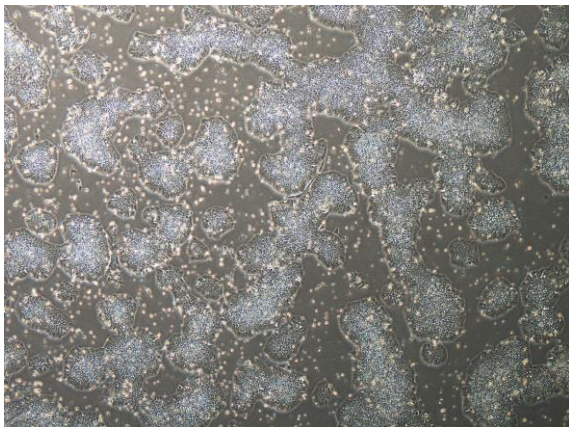
CiRA-j-1571-C: passage-3



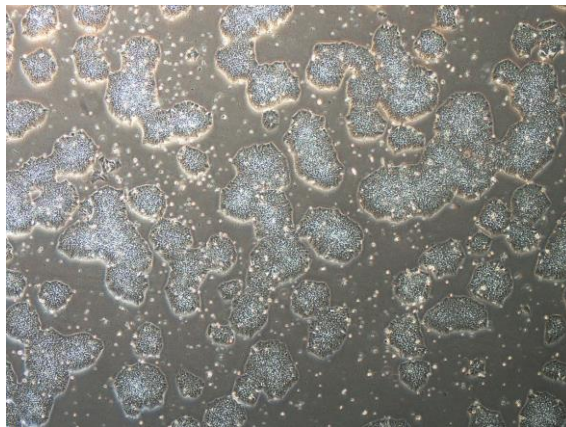
CiRA-j-1571-D: passage-3



CiRA-j-1571-E: passage-3



CiRA-j-1571-F: passage-3



( All images were captured at 4x magnification )